

# CR4000 Large Centrifuge

## Rotor Recognition - 4 x 250ml max



**Speed** .....500-6,000 Rpm  
(10 Rpm steps)

**Rcf max** .....4,500 G

**Timer** .....0-99 Mins & hold  
(30 sec steps)

**Dims HWD** .....310 x 400 x 550mm

**Weight** .....22 Kg (without rotor)

**Power** .....223 watts

**Memory** .....10 programs

**Accel rates** ...10 programs

**Decel rates** ...10 programs

## Fixed Angle Rotors

## Swing Out Rotors

*Adaptors available see page 15*

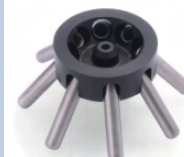


Rotors

**BRK5324**

**BRK5308**

Rotor type	24 x 15ml	8 x 50ml
Tube size max	17 x 120mm	30 x 120mm
Minimum speed	500 Rpm	500 Rpm
Maximum speed	6,000 Rpm	6,000 Rpm
Maximum Rcf (G)	4800	4800
Radius max cms	12	12
Sample tube angle (o)	30	30
Acceleration time (secs)	35	35
Deceleration time (secs)	35	35
Autoclaveable (frequency)	121°C (20)	121°C (20)



Rotors

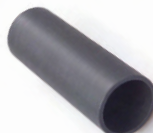
**BRK5510**

**BRK5508L**

Rotor type	4 x 250ml	8 x 15ml
Tube size max	62 x 130mm	17 x 120mm
Minimum speed	500 Rpm	500 Rpm
Maximum speed	4,000 Rpm	4,000 Rpm
Maximum Rcf (G)	2600	2600
Radius max cms	14.5	14.5
Sample tube angle (o)	0	0
Acceleration time (secs)	35	25
Deceleration time (secs)	35	25
Autoclaveable (frequency)	121°C (20)	121°C (10)

***Sealed lids available set 4 Part Nos 5419***

## Reducers



Rotors

BRK5324

BRK5308

Part number

**RM05 (5ml)**

**RM15 (15ml)**

Tube size max

13 x 80mm

17 x 120mm

Part number

**RM10 (10ml)**

**RM25 (25ml)**

Tube size max

16 x 100mm

25 x 100mm